



ARE WE LIVING IN THE END TIMES?

DEW'S – PART 2
(DIRECTED ENERGY WEAPONS)

YAHUAH'S OASIS

Find us on YouTube and Vimeo



Search



HOME PAGE

PRAISE MUSIC

APPOINTED TIMES (FEASTS)

THE COVENANT

GENESIS

MORE...



You can find the PDF for this study under the MORE tab – END TIMES

<https://www.yahuwahsoasis.com>



Daniel 12:4

But you Daniel, seal, close and keep the words secret and seal, close and shut up the scroll until the time of the end; many will run back and forth, become apostate, turn aside or fall away and entangle oneself and knowledge on moral qualities, understanding and wisdom will increase and made numerous.



Amos 8:11

“Behold and look, the days are coming”, declares my Eternal Yahuah, “When I will send a famine, starvation and hunger in the land, not a famine, starvation and hunger for bread and not a thirst for water, but of hearing, understanding and receiving and taking action of the Words and Communication of Yahuah.”

The adversary through his minions works very hard to strip away Yahuah's words. We are seeing that in the way the world has become.

It's now worse than Sodom ever was and with increasing technology and the end goal to merge humankind with machine as an enticement for immortality, Yahuah's words are beginning to take a poor second to becoming righteous and finding true immortality!

The adversary is coming for Yahuah's Words and we cannot let that happen by being **SILENT!**



A DEW is a system using a beam of concentrated electromagnetic energy (including but not limited to lasers and high power microwave systems), or atomic or subatomic particles primarily as a direct means to kill, injure, disable, or temporarily incapacitate people or destroy, damage or temporarily incapacitate property or materiel. Acoustic weapons use sound across the entire frequency spectrum to kill, injure, disable, or temporarily incapacitate people. Acoustic weapons, although outside the Joint definition of DEW, have effects and hazards more similar to DEW than to conventional weapons.

We're going to show you a very interesting video about DEW – this is from the fires in 2017: <https://www.youtube.com/watch?v=MhH0MU-IhHA>

The United States is deploying a new generation of weapons that discharge light-wave energy, the same spectrum of energy found in your microwave, or in your TV remote control. They're called "directed-energy weapons". Lasers, high-powered microwaves, and particle beams. They claim that this technology is new and that first directed energy weapons are being tested right now, but the fact is that advanced technology is always suppressed from the general public.



Now the previous video was from the fires of 2017, while this next video was on 11/13/2018 – this is only a 20 second video:

<https://www.youtube.com/watch?v=AdtHy-U7vy4>




**“The Most Selective Wildfires
in Recorded History”**

11/14/2018

**Notice the houses —
ONLY — are destroyed;
not burned to the
ground, mind you,
rather they are
imploded which causes
them to collapse in on
themselves with great
force and destruction.**



An aerial photograph showing a residential subdivision where many houses have been completely destroyed, leaving only rubble and charred remains. The surrounding landscape is lush with green trees and grass, and a paved road runs through the center of the area. The scene is a stark contrast between the devastation of the destroyed homes and the untouched natural environment.

Also, notice how the trees and grass and streets and sidewalks show no evidence whatsoever of fire damage.

That's because there was no fire ... and certainly not a wildfire anywhere near that residential subdivision.



Even when the electrical grid goes down Smart meters are equipped with technology that provides a digital signature that can be identified by drones, airplanes and satellites from above. It also appears that these devices can be triggered to start a small isolated fire. Whether they can be used to start a whole house electrical fire is also a distinct possibility.



1/26/2019

SMART meter on fire (video-frame from [SMART meter on fire](#))



The current California wildfire season that began at the end of October has produced an unusual number of predicaments whereby the wildfires never even got close to the damaged areas. These transparent attacks, then, appear to be focused on certain neighborhoods and/or subdivisions. For the uninitiated, there are various communities that have been established all over America that are dedicated and/or intentional communities. Some of these are groups of ardent environmentalists who all live in the same neighborhood because of their shared values. Some of these communities are composed of only former CIA operatives who are still working undercover on a special project. Some of them are COINTELPRO agents assigned to a mission that requires them to all live close to each other.

In any event, there are many communities that no one knows about, except those homeowners, which cohere around a specific endeavor or philosophy that might also be targeted by the government. If there is one state in the USA that has had this type of living arrangement going on for many decades, it's California. The "Canyons" around Los Angeles are a perfect example of these secret intentional communities literally overseen by the C.I.A. Laurel Canyon, for example, had so many famous singers and actors living there many of whom met a violent or gruesome fate that it's become quite notorious.





The rather concerning aspect of the California firestorm story is that this can happen anywhere in America. All that's required is that the targeted region have homes with SMART meters, chemically geo-engineered skies and an Air Force base or other military installation from which to launch a DEW. Even without the launch site, drones and ***low-altitude satellites can be used to trigger these events with great ease in the dark of night.***

Psalm 91:5

You are not in a continual state of great distress and deep concern which would normally intimidate and cause terror in the midst of continuous and ongoing dangers, if it were not for Yahuah's promise. The wisdom of trusting Him keeps you from being causelessly afraid.


Not of the sudden dread over impending trouble because of the evil that is continually going on. It strikes purposely *at night* to instill the most terror and trembling. Any manner of spread of death and destruction by disease, weapons or conspiracies. Specifically this promise is for those things which are neither foreseen nor can be prevented. Though it may be discovered it must be endured with trust in Yahuah.



However, it's the SMART meter that appears to be the key component of these black operations that take down a LOT of very expensive real estate. It's important to point out that these kinds of apocalyptic fire seasons did not take place in the pre-SMART meter age. Yes, there were certainly some catastrophic wildfire seasons but rarely was so much real estate completely destroyed. PGE has always known that SMART meters cause fires and even fired meter reader because of his whistleblowing.


With the rampant fires in California, most residents don't even have time to research or consider what is happening to their state.

However, most of the residents not in the direct line of fire won't even listen to the idea that they are under attack much less consider that the use of Directed Energy Weapons is involved.


An aerial, top-down view of a city street scene during a simulated attack. Several cars are shown in various states of destruction. Some are overturned, and others are engulfed in bright orange and yellow flames. Thick, dark grey smoke billows from the burning vehicles, filling a significant portion of the sky. The street is paved with asphalt and has white lane markings. The overall scene depicts a chaotic and destructive event.

That is the primary idea behind these weapons
(DEW's – which have been around since the 60's but
more than likely even longer)... “Plausible
Deniability” – “Stealth Attack”.

Now I understand that when it comes to
California, some people may ask “why here,
why California”? The short answer *is Smart
Cities.*



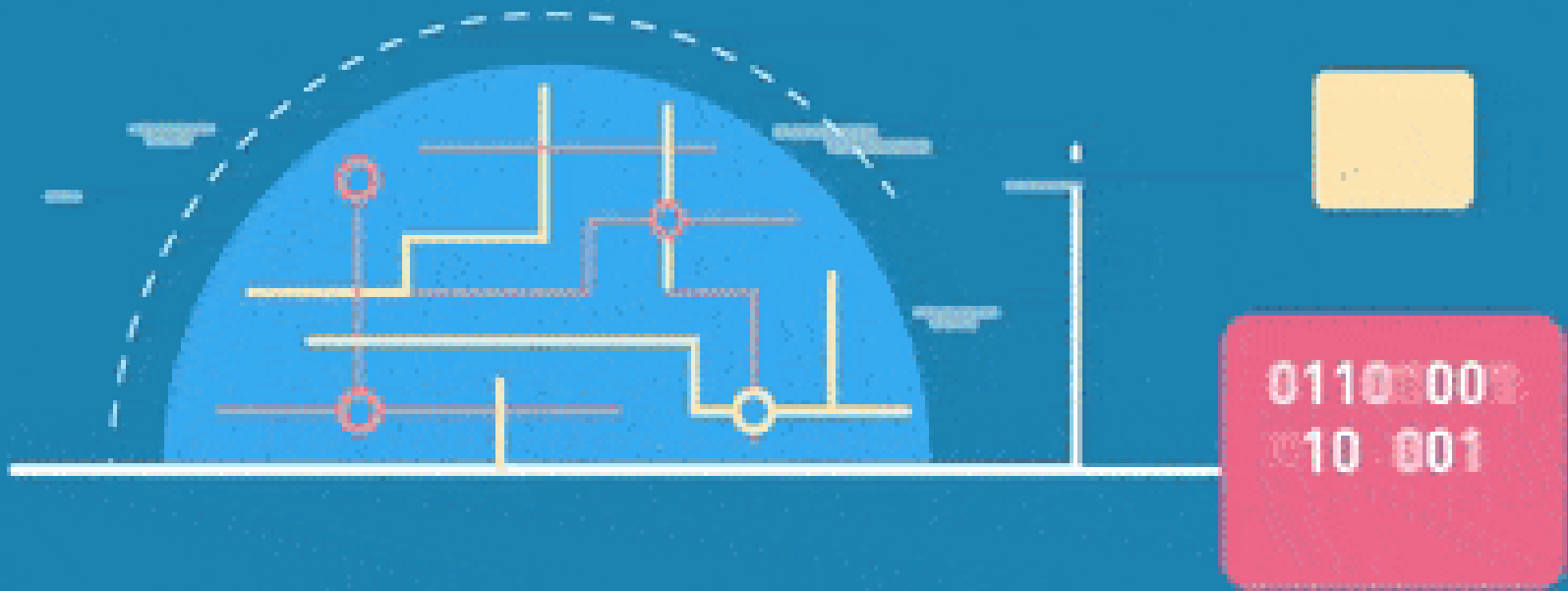
A smart city is an urban area that uses different types of electronic data collection sensors to supply information which is used to manage assets and resources efficiently. This includes data collected from citizens, devices, and assets that is processed and analyzed to monitor and manage traffic and transportation systems, power plants, water supply networks, waste management, law enforcement, information systems, schools, libraries, hospitals, and other community services.



The smart city concept integrates information and communication technology (ICT), and various physical devices connected to the network (the Internet of things or IoT) to optimize the efficiency of city operations and services and connect to citizens. Smart city technology allows city officials to interact directly with both community and city infrastructure and to monitor what is happening in the city and how the city is evolving.



If you do a bit of research into Smart Cities you will quickly come to find that these Smart Cities will be a place for people to live who will have absolutely no privacy, no matter where they are in these cities. If you happen to know anything about agenda 21 / 2030 then you can make the connection between the two in very short order. Smart Cities equate to no more than the complete and total loss of your privacy, autonomy (independence/freedom), and the loss of even your most basic human rights.



Oh the Smart City concept won't be advertised in that light though. No they will be touted as the best new way to live than there ever was before. You will be the lucky recipient of your very own (very small) place to live that is in a High Tech City with so many bells and whistles. Only those bells and whistles will not be geared to your pleasure, they will ultimately be geared toward your forced compliance.



But did you know that aside from the bombings that took place in IRAQ on that highway of death in 1991, something else took place during the 2003 campaign “Operation Iraqi Freedom”, deemed the battle for the airport, that not many people are aware of even to this day. That something else may prove to be even more heinous than the 1991 bombing of the Highway of Death (Hwy 80).

It seems the first use of EXPERIMENTAL “portable Directed Energy Weapons” took place in IRAQ during the 2003 Iraq War campaign (referred to in the US as “Operation Iraqi Freedom”).

Early Investments/Statewide Benefits



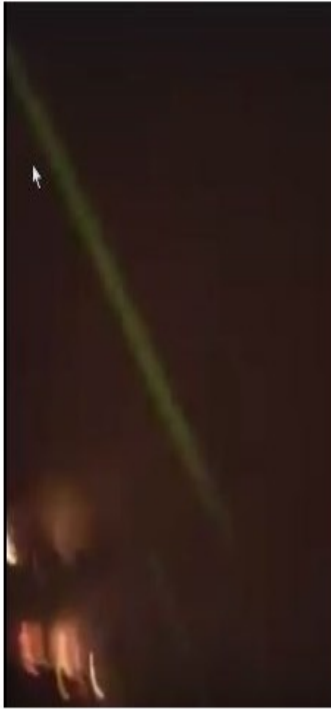
Some have found similarity between the California high speed rail system and the paths of the fires. But, why not just use eminent domain to build the railway just as what had always been done for highways and other railroads?. Well, it's still all related to Agenda 30. The high rail system is planned to go from megaregion to megaregion and get people out of their cars to limit where we can go and to deprive plants of plant food, CO2. Also to link the SMART CITIES.



California wildfires map lines up with proposed high speed rail for California

1/26/2019

Source: Calif. High Speed R



Screen capture of laser from video entitled "Energy Weapon Caught Red Handed Setting Fire to California".

<http://www.chemtrailplanet.com/DEW.html>



This is from video titled, "Directed Energy Speed of Light Defense" by LockheedMartinVideo

<http://chemtrailsmuststop.com/2018/12/smoking-gun-hard-evidence-shows-camp-fire-was-manmade-genocide-and-mass-destruction-of-paradise-carefully-planned/>



8 kilometers

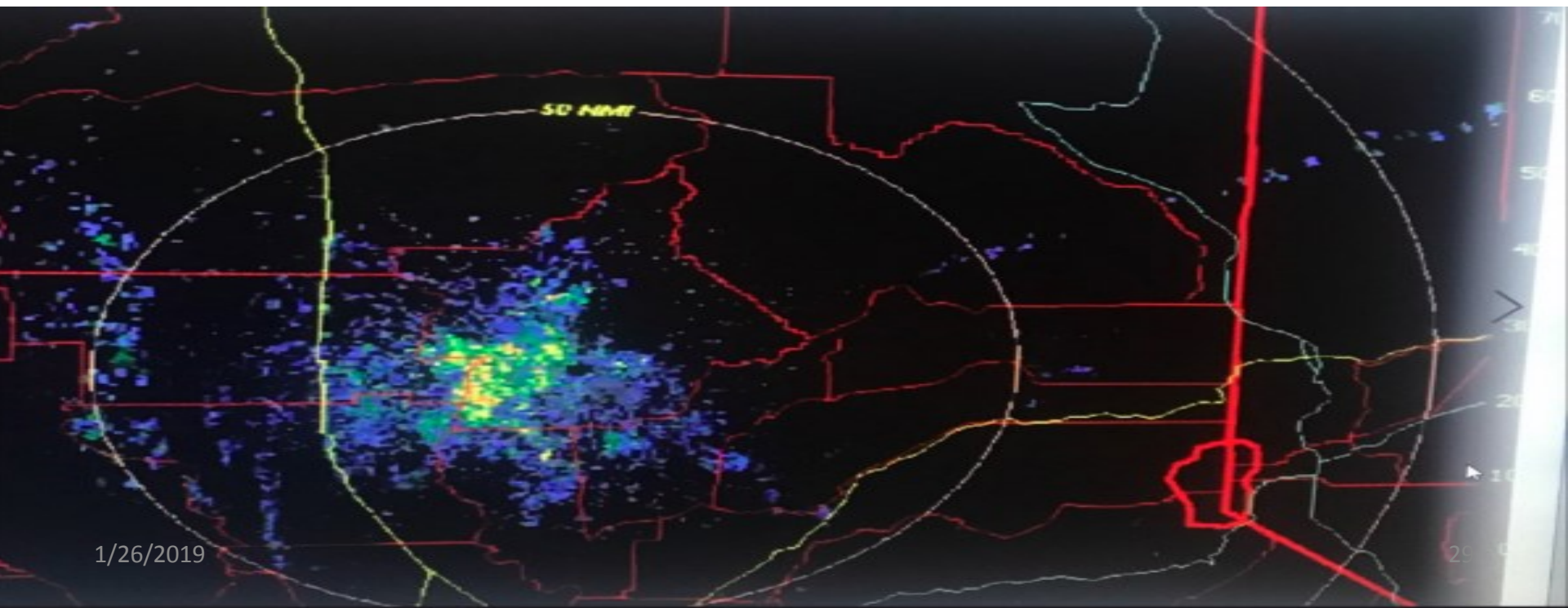
Camp Fire, Butte County, California, USA
November 8th, 2018 - Natural colors with IR highlights

Landsat 8 data courtesy of the U.S. Geological Survey
Processed by Pierre Markuse

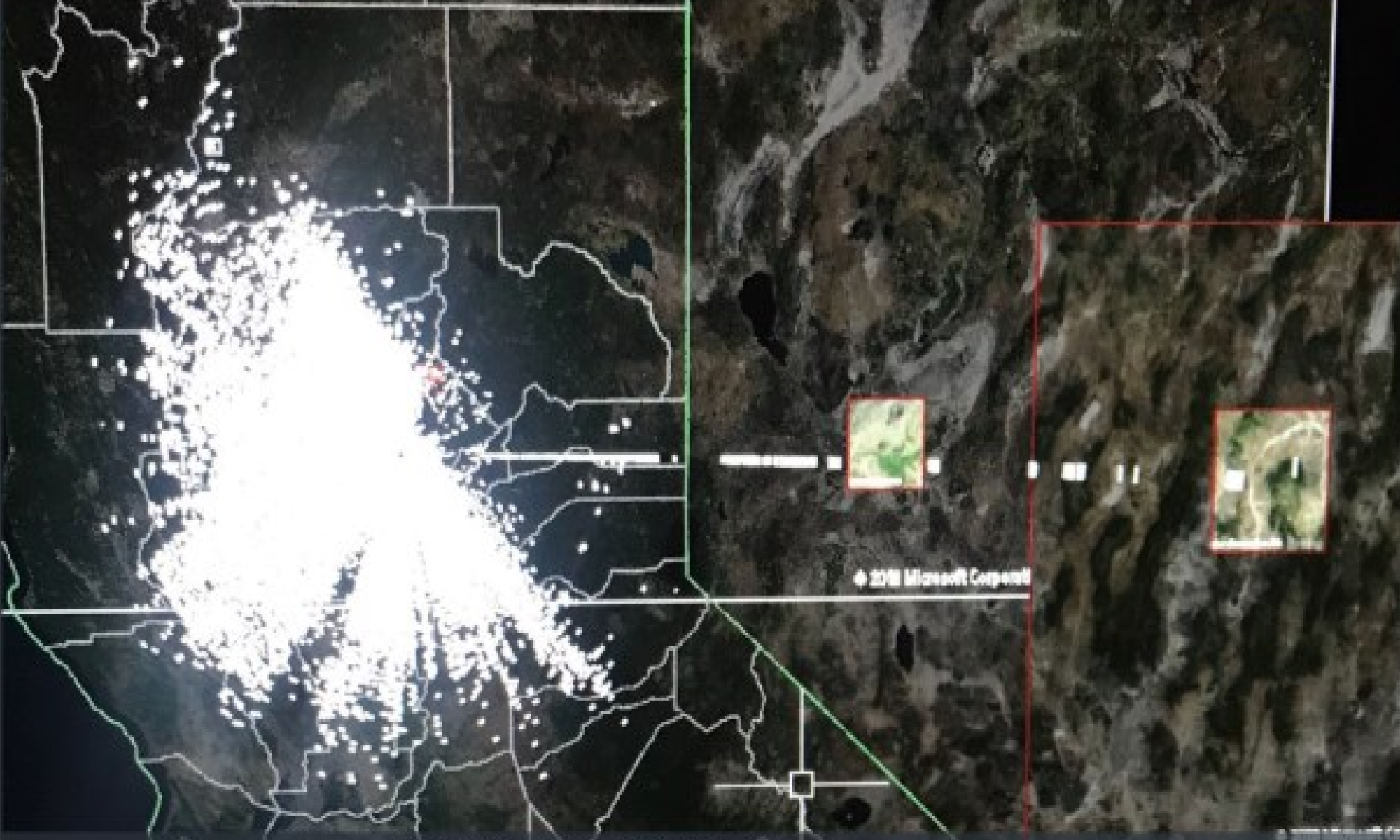
Satellite image shows incredible fiery heat of Camp Fire...**that's what microwaves do especially when they're turned way up by GWEN Stations**

1/26/2019

SOTN Editor's Note: Proof has been presented via the hard scientific evidence provided by Nexrad Radar, Autocad Civil 3D, Modis 6 and VIIRS (Visible Infrared Imaging Radiometer Suite) satellite hot-spot data that microwaves produced from 3 GWEN stations were utilized to greatly exacerbate California's devastating Camp Fire. What follows are 2 screenshots showing the cluster of microwaves that were transmitted throughout the exact area where the Camp Fire exploded.



1/26/2019



MAGA "PROUD TEXAN" @drew91172026 · Dec 12
#californiaisrevealed
#microwavesstackcampfire

here is the last one everybody. there is no need to search any further. in my post yesterday I only found one beam hitting the camp but there was actually two. that came from my friend @K123-kartsover

The United States is bathed in this magnetic field which can rise from ground up to 500 ft, but goes down into basements, so everyone can be affected and mind-controlled. The entire artificial ground-wave spreads out over the whole of the USA like a web. It is easier to mind-control and hypnotize people who are bathed in an artificial electromagnetic-wave.

GWEN transmitters have many different functions including:

1. controlling the weather,
2. mind control,
3. behavior and mood control, and
4. sending synthetic-telepathy as infrasound to victims with US government mind-control implants.

GWEN works in conjunction with HAARP and the Russian Woodpecker transmitter, which is similar to HAARP. The Russians openly market a small version of their weather-engineering system called Elate, which can fine-tune weather patterns over a 200 mile area and have the same range as the GWEN unit. An Elate system operates at Moscow airport. The GWEN towers shoot enormous bursts of energy into the atmosphere in conjunction with HAARP. The website www.cuttingedge.org wrote an expose of how the major floods of the Mid-West USA occurred in 1993.

Atmospheric Vapor Rivers

Enormous, invisible rivers of water, consisting of vapors that flow, move towards the poles in the lower atmosphere. They rival the flow of the Amazon River and are 420 to 480 miles wide and up to 4,800 miles long. They are 1.9 miles above the earth and contain a volume of water equivalent to 340 lbs of water per second. There are 5 atmospheric rivers in each Hemisphere. A massive flood can be created by damming up one of these massive vapor rivers, causing huge amounts of rainfall to be dumped. The GWEN Towers positioned along the areas north of the Missouri and Mississippi Rivers were turned on for 40 days and 40 nights, probably mocking the Flood of Genesis. (This was



DEW (Direct Energy Weapons) Woolsey
fire?

This is Malibu, California



1/26/2019

33



**Plastic garbage cans
- plastic mail boxes -
trees OK
Houses completely
destroyed!!!**

(Tesla Tech)

Harp-based, "Directed-Energy-Weapon"

Operation Function: Project Lightning Bolt(s) Into harp-generated: Tornado(s)/ Hybrid Water Spout(s)

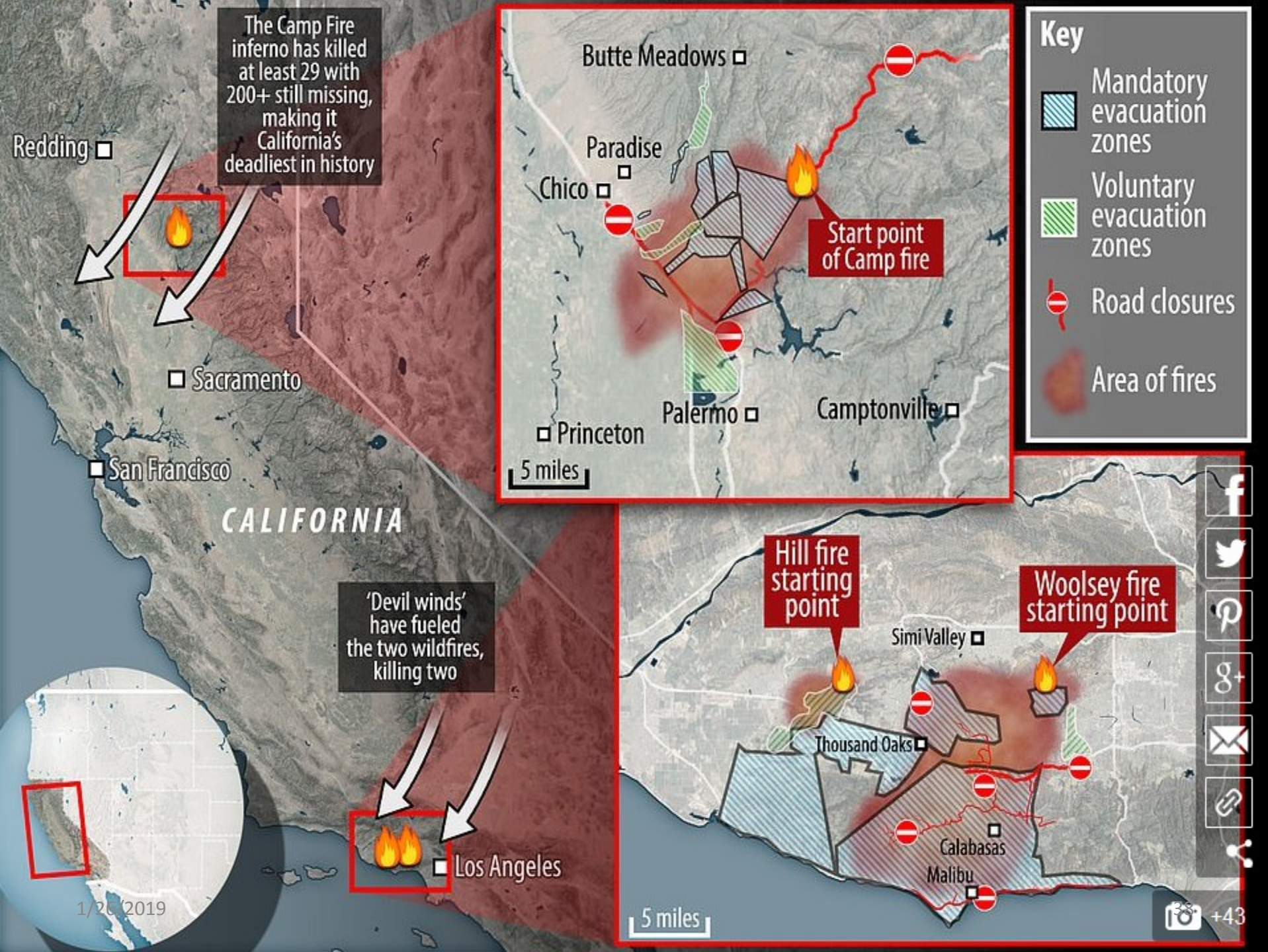


<http://strangesounds.org/2019/01/its-a-widespread-phenomenon-in-parallel-to-queens-more-mysterious-electrical-sky-events-over-dublin-ireland-and-amazing-explosions-in-kenner-louisiana.html>

On the same day as the sky lit up with mysterious blue light over Queens, NYC, powerful electrical explosions also occurred in Kenner, Louisiana and Ciudad Juarez, Mexico. Two days after, something really weird occurred over Dublin, Ireland. It seems to be a widespread electrical phenomenon. Are they all linked? Like to a geomagnetic storm or something similar going on in space? Or are these phenomena all more grounded like the mystery behind “Project Blue Beam.”

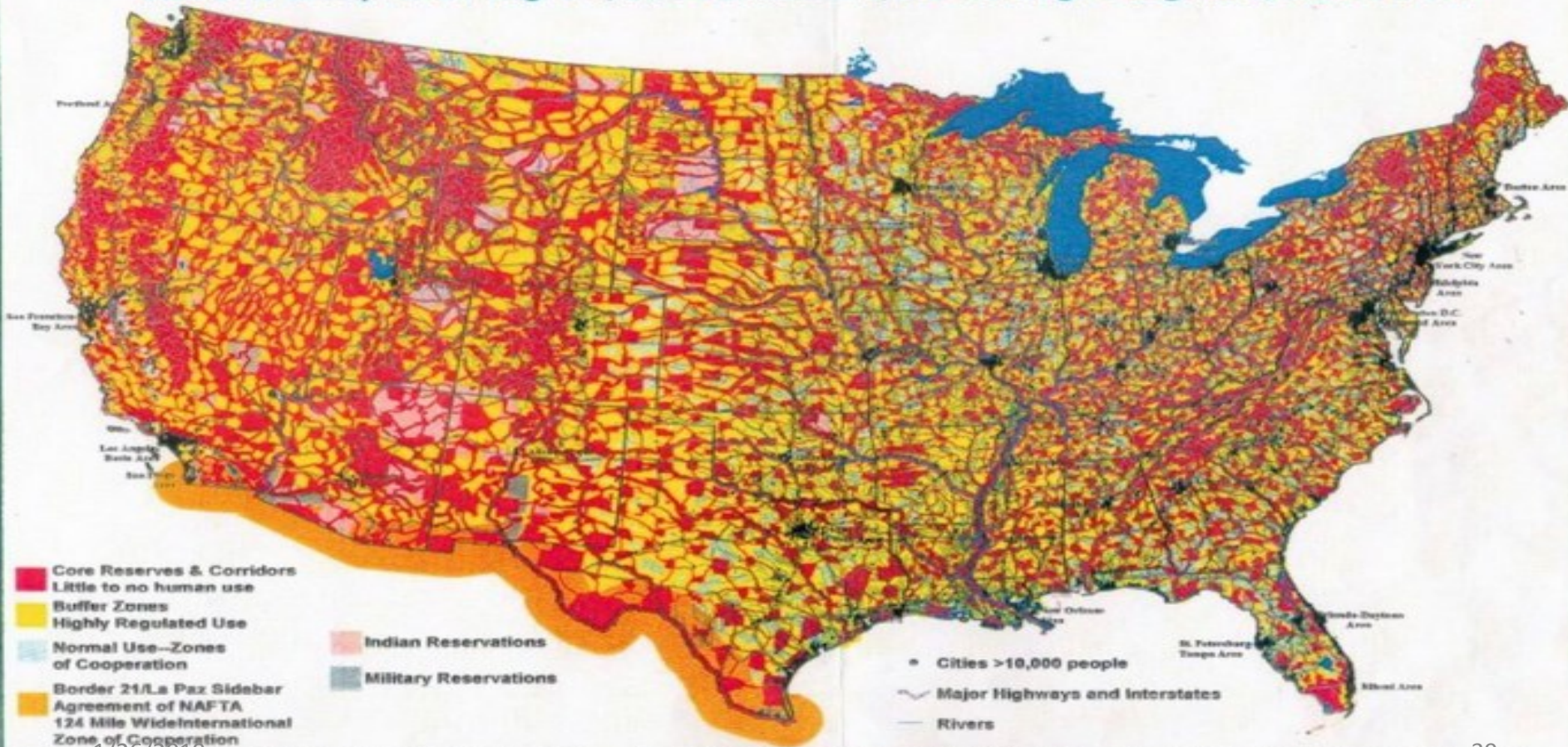
Laser Drone





Agenda 21 - The UN takes all land and resources and they allow us to live in the little black dot areas... Wow, that will hold what 20 or 30 million? Hmm.

Simulated Reserve and Corridor System to Protect Biodiversity
As Mandated by the Convention on Biological Diversity, The Wildlands Project, UN and US Man and Biosphere Program, and Various UN, US Heritage Programs, and NAFTA



1/26/2019
Taken From: The United Nations Convention on Biological Diversity, Article 8e; United Nations Global Biodiversity Assessment, Section 13.4.2.2.3; US Man and the Biosphere Strategic Plan, UNUS Heritage Corridor Program, "The Wildlands Project", WildEarth, 1992. Also see Science, "The High Cost of Biodiversity," 25 June, 1993, pp 1668-1671 and the Border 21 Sidebar of NAFTA.
The very high percentage of buffer zones in the West is due to the very high percentage of federal land.

**FALSE FLAG ATTACK: Greece Targeted With
Geoengineered Wildfire Terrorism & DEW
7/24/2018**



**Videos and photos document a similar type of
"Arson from the Sky" that occurred during the
last series of catastrophic firestorms in
California**

<http://themillenniumreport.com/2018/07/greece-targeted-with-geoengineered-wildfire-terrorism-photos/>
1/26/2019



This DEW and arson attack on Greece, then, appears to be an act of sheer intimidation so that the government in Athens does not join Italy in rebelling against the European Union. Even more significant is the necessity of the EU keeping Greece in line regarding immigration. Greece is the key link in the chain for war refugees and economic immigrants traveling from the Middle East and North Africa now that Italy has shut down the Italian peninsula route.



Greece has asked for US drone to 'detect suspicious activity' as it emerged 15 fires had started at same time

1/26/2019

**These studies are NOT meant to SCARE, but to be aware.
With Yahuah, we will never be afraid IF we TRUST in him,
Like Daud/David:**

Please pray against these evils as well!!

Psalm 91:2

**I will say of YAHUAH, He is my refuge
and my fortress: my ETERNAL; in HIM
will I TRUST.**

Fair Use

Excerpts of copyrighted material may, under certain circumstances, be quoted verbatim for purposes such as criticism, news reporting, teaching, and research, without the need for permission from or payment to the copyright holder.